



CLIENT PACKAGE

www.woodlandbusinesssolutions.com

TABLE OF CONTENTS

01

Introduction

04

How It Works

02

Your Support Options

05

FAQs

03

Transparent Pricing

06

Lets Get Started

WELCOME



Clarity . Structure . Growth

At Woodland, I believe every business deserves support that feels personal, grounded, and aligned with your vision. This guide walks you through how we'll work together, your support options, and what to expect as we grow side by side.

SUPPORT OPTIONS

Because your business deserves strategy — not survival mode.

Woodland offers flexible hourly support designed to meet you where your business is at.

Choose the level of partnership that fits your goals — from light administrative relief to strategic operations leadership.

Essentials

For businesses that need light, reliable support to take the weight off the day-to-day.

Growth Partner

For owners ready to bring order to the moving parts of their business. Think structure, consistency, and accountability.

Business Development Partner

For those who want clarity and growth strategies. I'll help refine your vision, set intentional goals, and create systems that give you both direction and momentum.

Fractional Operations

For leaders who need executive-level support without the overhead of a full-time hire. Oversight, systems, and leadership — simplified.

TRANSPARENT PRICING



Services That Strengthen the Backbone of Your Business

Woodland provides flexible, hourly support designed to simplify your systems, manage your finances, and keep your business running efficiently behind the scenes.

Support is tailored to your unique goals — whether that's organizing your books, improving workflow, or lightening your administrative load.

\$30-\$40/hour (minimum 10 hours per month)

Every engagement is customized to your business needs — clear, transparent, and built for long-term growth.

Need a one-time system setup or special project?

Individual quotes are provided based on scope and complexity.

Flexible, hourly support designed to keep your business running smoothly — without the overwhelm.

Clarity. Consistency. Confidence.

Woodland helps you build a business that runs smoothly — behind the scenes.

HOW IT WORKS

Discovery Call:

A chance to connect and share your story. We'll talk about your vision, your challenges, and the support you need most.

Proposal:

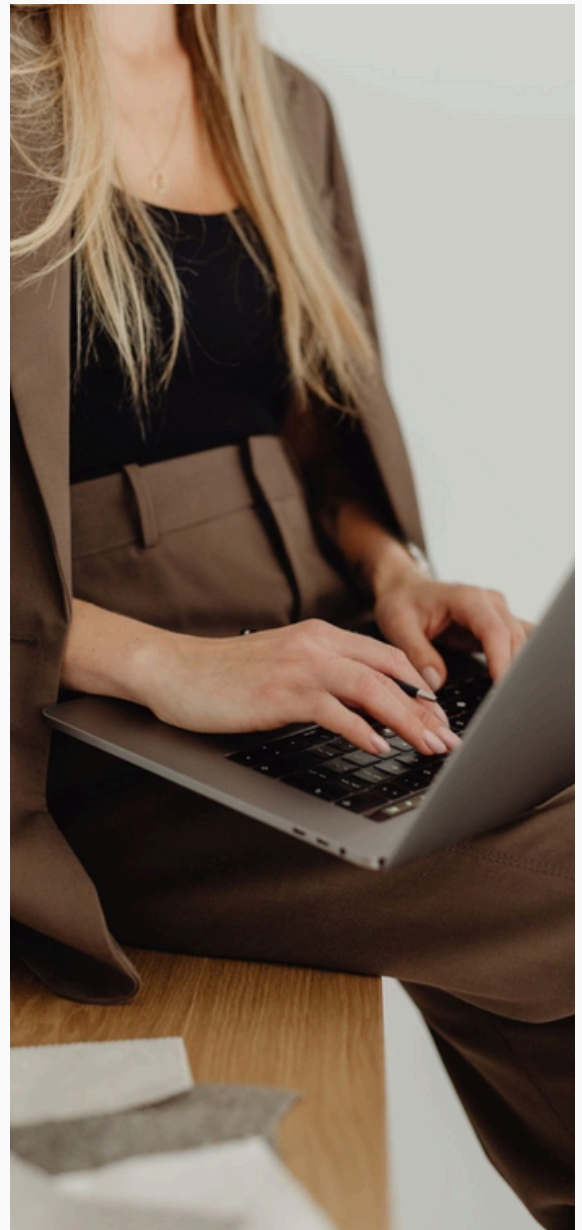
You'll receive a clear plan that outlines the best way forward — no fluff, just honest solutions that fit your stage of business.

Onboarding:

We'll gather what's needed and set up simple systems so things feel organized and grounded right away.

Support & Growth:

From here, we walk side by side. Whether it's admin relief, development strategies, or operational leadership, you'll have steady support as your business evolves.



FAQS

01 **How do I know which package is right for my business?**

Will start with a discovery, called to talk about your goals and priorities. From there, I'll recommend the option that feels like the right fit for where you are now.

02 **Can I switch packages as my business evolves?**

Absolutely. Your needs will shift as your business grows, and your support should too. Will adjust as needed, so you always feel supported.

03 **What does Onboarding include?**

Onboarding is about making things feel easy and clear. Will gather documents, set up systems, and create simple workflow so you feel grounded from the start.

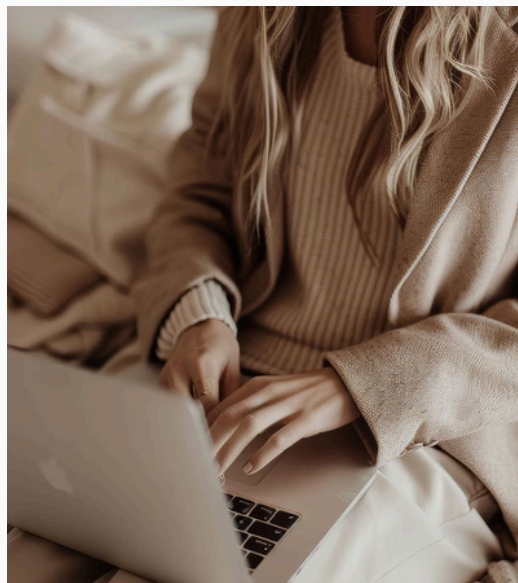
04 **Is there a contract or minimum commitment?**

Most partnerships begin with a three month commitment. This gives us time to build trust, set up strong systems and create results that matter.

05 **How will we communicate?**

Will stay connected through regular check-in by Zoom work phone, supported by ongoing email updates. My goal is to keep everything simple, collaborative and clear.

LET'S GET STARTED!



Your business deserves more than just keeping up — it deserves clarity, structure, and intentional systems that let you focus on growth, not overwhelm. I'd love to walk alongside you as your trusted partner.

WOODLAND
BUSINESS SOLUTIONS

250.715.5772

info@woodlandbusinesssolutions.com
woodlandbusinesssolutions.com

f **ig** @woodlandbusinesssolutions
